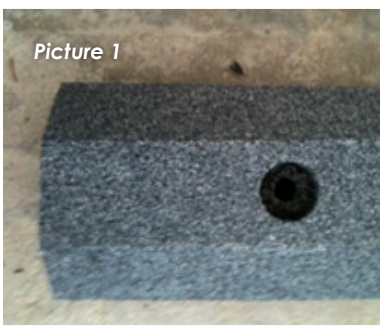


Picture 1



Picture 2



Picture 3



Picture 4



Picture 5



Picture 6



Tyrex



WHEEL STOP INSTALLATION INSTRUCTIONS

Suggested methods for Installing the Tyrex Wheel Stop:

1. Dyna Bolts

- For a Wheel Stop that is 1650mm long it is suggested that 3 bolts be used. Longer Wheel Stops may require additional bolts.
- Pre-drill the bolt hole. First drill a 38mm Diameter hole to 15mm deep (for counter sinking of the bolt head). Then drill a hole right through using a 16mm drill bit (see pictures 1 and 2).
- The above dimensions are for using a 16mm x 140mm Dyna Bolt and a 5/8 Washer (see pictures 3 and 4)

2. Sikaflex-2

- In some instances it may be desirable to affix the Wheel Stop with a combination of bolts and Sikaflex-221 or in some instances it may be possible to just use Sikaflex-221 (see picture 5).

3. Tar Spikes

- For installation on surfaces such as bitumen and tar it is possible to affix the Wheel Stop using a spike and washer. It is suggested to pre-drill the hole and pre-drill a larger hole to 15mm deep for counter-sinking of the spike head and washer (see picture 6).